

**University of Missouri System
Undergraduate Financial Aid Summary Report
FY2000-FY2004**

(Missouri Resident Undergraduate Students)

Report Prepared by
Dr. La Shonda Carter-Boone
Senior Institutional Research Analyst

Office of Institutional Research 15 itu s5Dan9RP

University of Missouri System
Undergraduate Financial Aid Summary Report
FY2000-FY2004
(Missouri Resident Undergraduates)

Executive Summary

The *Undergraduate Financial Aid Summary Report* includes undergraduate financial aid distribution patterns for the University of Missouri System and the four campuses from fiscal year 1999-00 (FY00) through fiscal year 2003-04 (FY04). In the first part of this report eight questions are addressed at the UM System level:

1. How many students received aid and what type of aid was received?
2. Has grant aid kept pace with increases in educational and required fees?
3. How has the distribution of institutional gift aid changed over the past five years?
4. What percent of educational and required fees is met by grant aid?

- Missouri resident undergraduate students in the lower income categories have the highest grant aid as a percentage of educational and required fees. In FY04, grant aid as a percent of tuition and required fees decreased for all income categories compared to FY00 (Table 1.2).
- Overall, the University continues to experience an increase in the number of students with income greater than \$60,000 who have financial need (Figure 1.3).
- Students with incomes less than \$40,000 have the highest amount of financial need and receive larger total financial aid awards than higher income students. However, lower income students continue to have the largest amount of unmet financial need (Figure 1.4).
- Over the past five years, the unmet financial need of lower income students has nearly doubled (Figure 1.5).
- Higher income students borrow a significant amount of the money that the family is expected to pay out-of-pocket (Table 1.3).

Campus-specific variations from System trends:

- On the Columbia campus the average amount of grant aid awarded to students in lower incomes exceeded educational and required fees in FY00 and covered 90% of these fees in FY04 (Table 2.2).
- The Kansas City and St. Louis campuses continue to experience significant increases in the number of low-income students that have financial need (Figures 3.3 and 5.3).
- Low-income students on the Kansas City and St. Louis campuses have a much larger amount of unmet need when compared to students in the same income categories on the other campuses (Figures 3.4 and 5.4).

Undergraduate resident vs. non-resident trends:

- Average grant aid to non-resident undergraduates has decreased nearly 12% over the past five years. In FY04 grant aid to non-resident undergraduates was nearly double the average grant awarded to residents (\$6,427 vs. \$3,495).
- In general, non-resident undergraduates receive institutional grant awards more than double the amount awarded to resident undergraduates. In FY04, non-resident undergraduates without financial need received the largest average institutional grant award, \$5,482. During that same year, resident undergraduates with financial need received an average institutional gift award of \$1,319.

The contextual basis of financial aid distribution

Very few undergraduates attending the University of Missouri pay the entire cost of attendance out-of-pocket. The majority of students receive some type of financial assistance to attend the University in the form of grants, scholarships, work study or loans. In addition, financial assistance comes from a wide variety of sources including the state and federal governments, profit and non-profit organizations, and the University (institutional gift aid). Finally, a significant amount of financial aid that is distributed is based on financial need, i.e. it is documented that the student's family cannot afford the entire cost of attendance. A student must complete a Free Application for Federal Student Aid (FAFSA) in order to determine the extent of financial need and the type and amount of aid based on need that can be awarded.

Many of the tables and figures throughout this report reference terms such as budgeted cost of attendance, financial need, grant aid, and unmet need. Assuming that a student has completed a FAFSA, Figure A.1 is provided to give an overview of how a student's financial aid package is determined.

Figure A.1
Example of How Financial Need is Determined and Aid is Distributed

\$14,000	Budgeted Cost of Attendance	{ includes educational & required fees, books, and living expenses
(4,000)	Less: Expected Family Contribution	
10,000	Financial Need	
(3,500)	Less: Grant Aid	{ includes need and non-need based grant aid from federal, state, institutional, and other sources
6,500	Remaining Need	
(1,000)	Less: College Work Study	
(4,000)	Less: Need-Based Loans	
(500)	Less: Alternative Loans	
\$1,000	Unmet Need	

Foremost, a BUDGETED COST OF ATTENDANCE (COA) is determined for every student that completes a FASFA. The COA varies by student and is based on factors such as residency status, load status (full or part-time), and living arrangements (on or off-campus). Next, the amount that the family is expected to contribute to cover the COA is determined based on several factors including the family's adjusted gross income. A student's financial need is determined by subtracting the EXPECTED FAMILY CONTRIBUTION from the budgeted

Section I

System-wide Financial Aid Trends of Full-Time, Degree-Seeking Missouri Undergraduates from FY00 to FY04

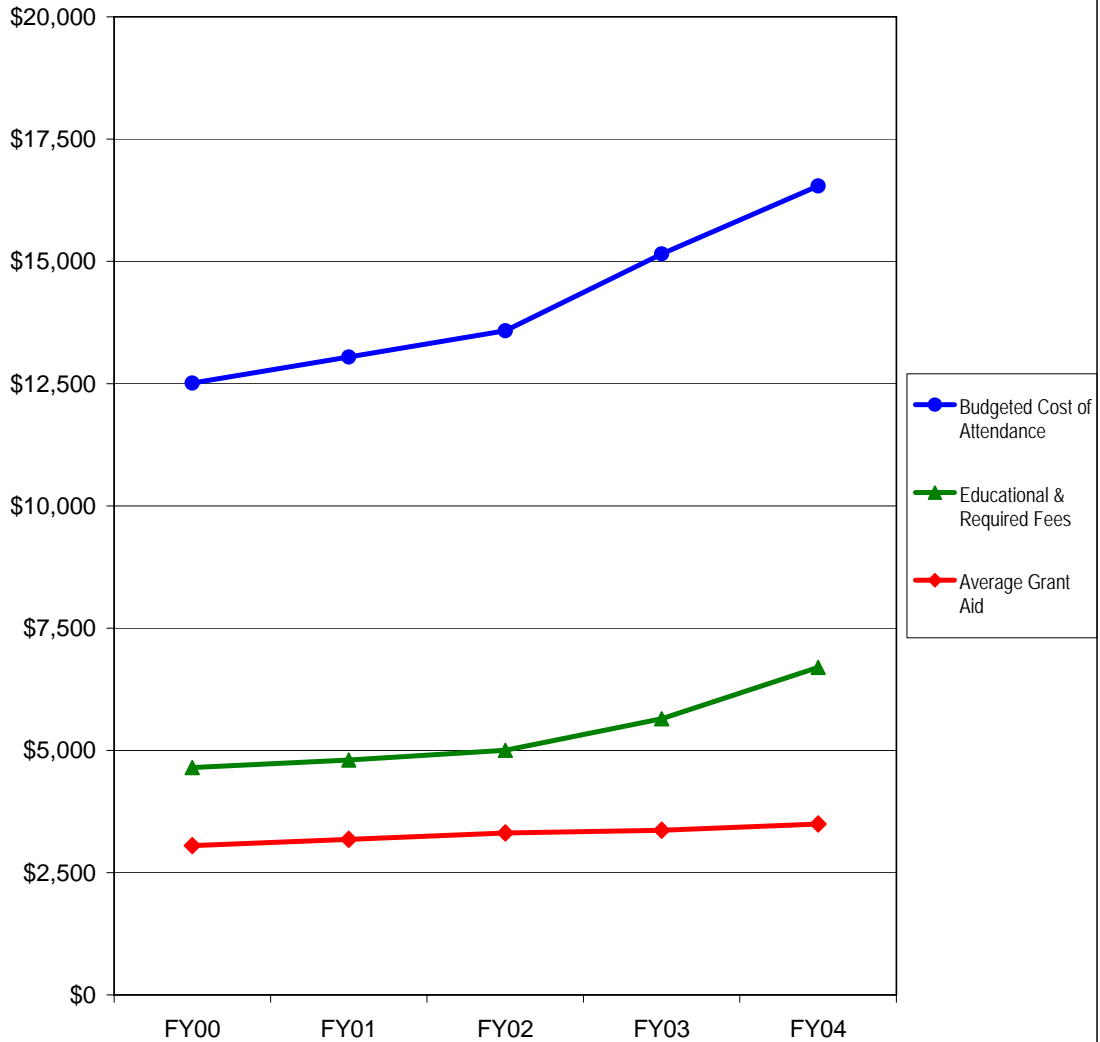
PLEASE NOTE:

5. How has the number of aid recipients with need changed by income level?

There has been a change in the number of aid recipients with need by income level. The number of aid recipients with need and incomes lower than \$40,000 increased slightly.

	FY00	FY01	FY02	FY03	FY04	5-yr # Change	5-yr % Change
Completed FAFSA, did not have a need	3,394	3,669	4,091	4,054	4,025	631	18.6%
Grant aid, no FAFSA	<u>3,704</u>	<u>3,891</u>	<u>3,757</u>	<u>3,593</u>	<u>3,615</u>	<u>-89</u>	-2.4%

Figure 1.2
Educational and Required Fees vs. 9-Month Cost of Attendance and Grant Aid for Full-time Undergraduate Missouri Residents at the University of Missouri System, FY00 - FY04



Source:
 IR&P/RS 2/05

	FY00	FY01	FY02	FY03	FY04	5-yr # Change	5-yr % Change
Budgeted Cost of Attendanc	\$12,513	\$13,043	\$13,581	\$15,153	\$16,542	\$4,029	32.2%
Educational & Required Fee	\$4,651	\$4,806	\$5,003	\$5,647	\$6,697	\$2,046	44.0%
Average Grant Aid	\$3,052	\$3,181	\$3,315	\$3,369	\$3,495	\$443	14.5%

Table 1.1

Average Institutional Grant Aid Distributed to Resident, Full-time, Degree-Seeking Undergraduates by Financial Need at the University of Missouri System, FY00 - FY04

	FY00		FY01		FY02		FY03		FY04	
	N	Mean	N	Mean	N	Mean	N	Mean	N	Mean
With Need	11,320	\$1,197	11,291	\$1,181	11,731	\$1,178	13,030	\$1,204	14,257	\$1,319
Without Need	7,040	1,736	7,560	1,707	7,848	1,621	7,647	1,558	7,640	1,651

Source: UIDS
IR&P/LCB 3/05

Table 1.2

Income Level	Grant Aid	% Educational & Required Fees	Grant Aid	% Educational & Required Fees
<				

Figure 1.3
Number of Full-time, Degree-Seeking 9-Month Undergraduate
Missouri Residents with Financial Need by Income Level at the
University of Missouri System, FY00 - FY04

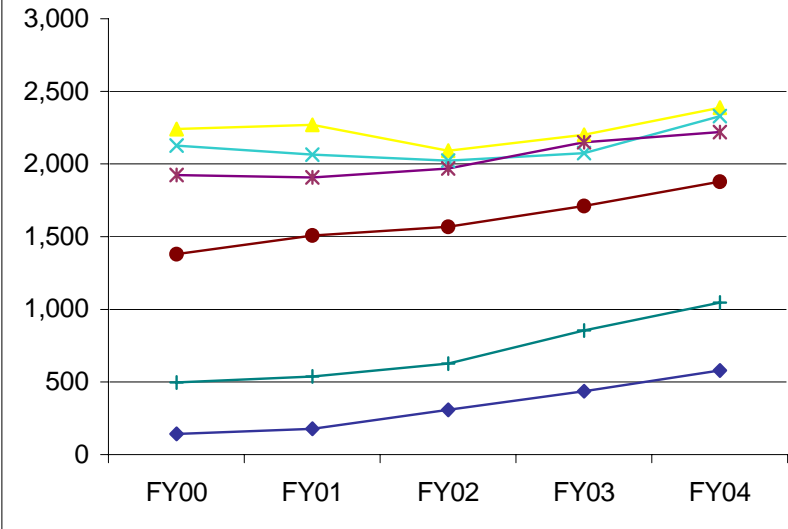


Figure 1.5
Average Amount of Unmet Financial Need by Income Level

a G221.7 552 m ()-5.3(Inc)4u 8.67.11 0 0 1628 508.0270 0 1628 508.0270 0 161.7 A6n

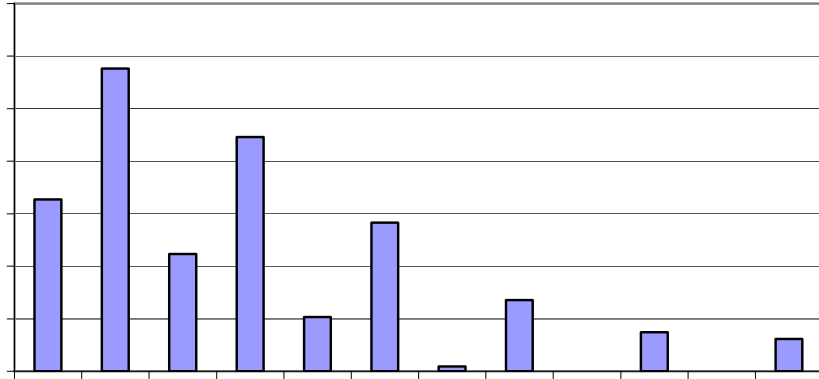


Table 1.3

	FY00	FY01	FY02	FY03	FY04	FY00	FY01	FY02	FY03	FY04	# Change FY00-FY04	% Change FY00-FY04
Total Enrolled for 9 months (N)	2,240	2,270	2,091	2,202	2,388						148	7%

Table 1.3 (Continued)

	FY00	FY01	FY02	FY03	FY04	FY00	FY01	FY02	FY03	FY04	# Change FY00-FY04	% Change FY00-FY04
Total Enrolled for 9 months (N)	1,381	1,508	1,568	1,712	1,879						498	36%
Cost of Attendance	\$12,364	\$12,915	\$13,562	\$14,854	\$16,235						\$3,872	31%

Section II

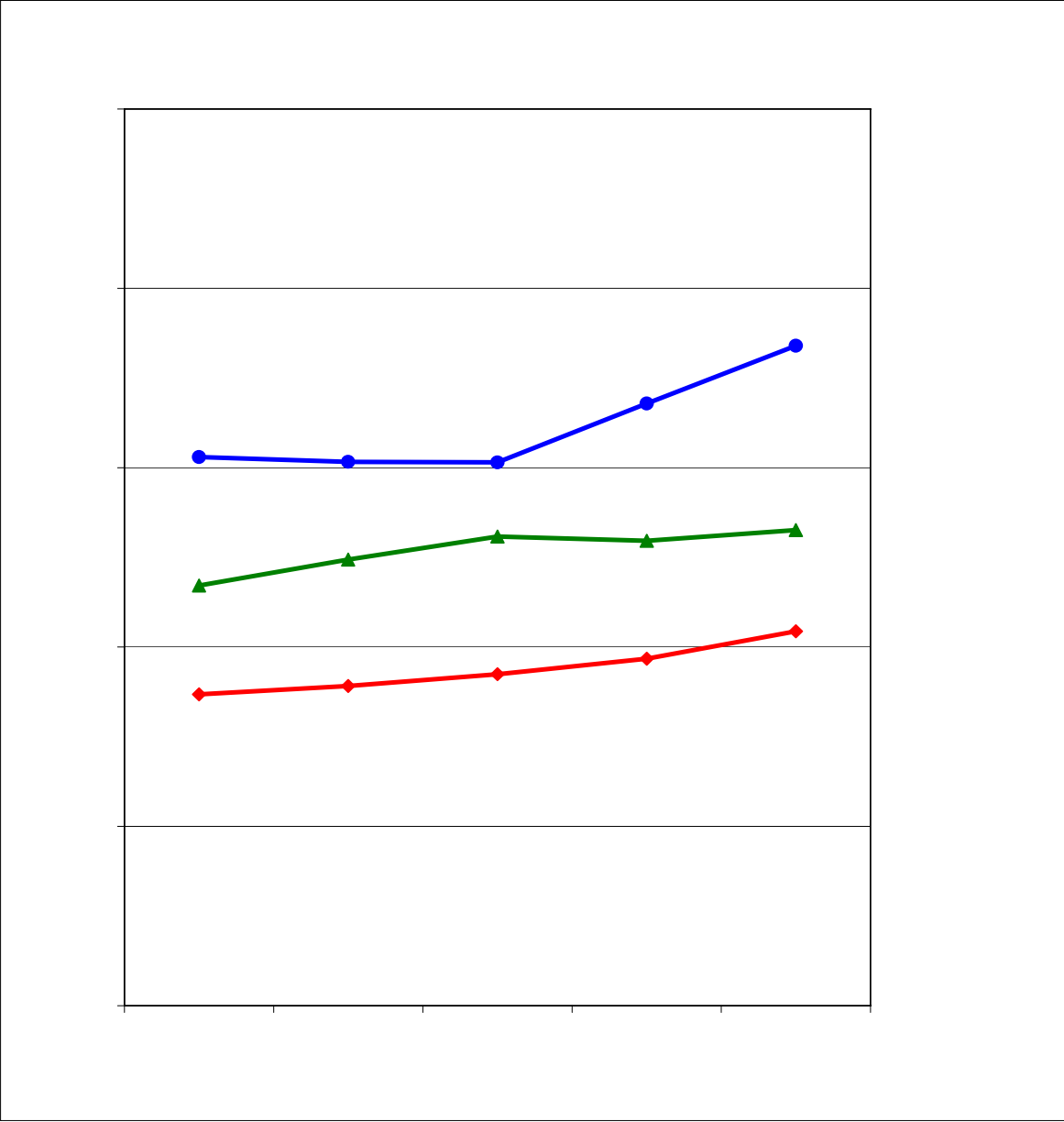
Campus-Level Financial Aid Trends of Full-Time, Degree-Seeking Missouri Undergraduates from FY00 to FY04

UM-Columbia (Table and Figure 2 series)

UM-Kansas City (Table and Figure 3 series)

UM-Rolla (Table and Figure 4 series)

UM-St. Louis (Table and Figure 5 series)



	FY00	FY01	FY02	FY03	FY04	5-yr # Change	5-yr % Change
Completed FAFSA, did not have a need	2,195	2,453	2,772	2,815	2,821	626	28.5%
Grant aid, no FAFSA	<u>2,491</u>	<u>2,521</u>	<u>2,460</u>	<u>2,370</u>	<u>2,484</u>	-7	-0.3%
Aid recipients with no need	4,686	4,974	5,232	5,185	5,305	619	13.2%
Aid recipients with need*	6,118	6,066	6,058	6,716	7,360	1,242	20.3%
Full pay / No aid	3,471	3,565	3,696	3,869	4,176	705	20.3%
Total of all full- time, Degree-Seeking MO UG	14,275	14,605	14,986	15,770	16,841	2,566	18.0%

* All aid recipients with need completed a FAFSA and were not expected to pay the entire cost of attendance.

	FY00	FY01	FY02	FY03	FY04	5-yr # Change	5-yr % Change
Budgeted Cost of Attendanc	\$12,200	\$12,583	\$13,681	\$14,149	\$15,557	\$3,357	27.5%
Educational & Required Fee	\$4,581	\$4,726	\$4,887	\$5,552	\$6,558	\$1,977	43.2%
Average Grant Aid	\$3,334	\$3,551	\$3,552	\$3,660	\$3,696	\$362	10.9%

Table 2.1**Average Institutional Grant Aid Distributed to Resident, Full-time, Degree-Seeking Undergraduates by Financial Need at the University of Missouri-Columbia, FY00 - FY04**

	FY00		FY01		FY02		FY03		FY04	
	N	Mean	N	Mean	N	Mean	N	Mean	N	Mean
With Need	6,118	\$1,556	6,066	\$1,500	6,058	\$1,524	6,716	\$1,563	7,360	\$1,707
Without Need	4,686	1,765	4,974	1,678	5,232	1,592	5,185	1,482	5,305	1,576

Source: UIDS
IR&P/LCB 3/05

Table 2.2**Total Grant Aid as % of Educational and Required Fees by Income Level at the University of Missouri-Columbia, FY00 & FY04**

Income Level	FY00		FY04	
	Grant Aid	% Educational & Required Fees	Grant Aid	% Educational & Required Fees
<\$20,000	\$5,344	117%	\$6,428	98%
\$20,000 to \$40,00	\$4,836	106%	\$5,880	90%
\$40,000 to \$60,000	\$3,463	76%	\$4,773	73%
\$60,000 to \$80,000	\$2,402	52%	\$3,016	46%
\$80,000 to \$100,000	\$1,955	43%	\$2,612	40%
>\$100,000	\$2,433	53%	\$2,157	33%

Source: UIDS
IR&P/LCB 3/05

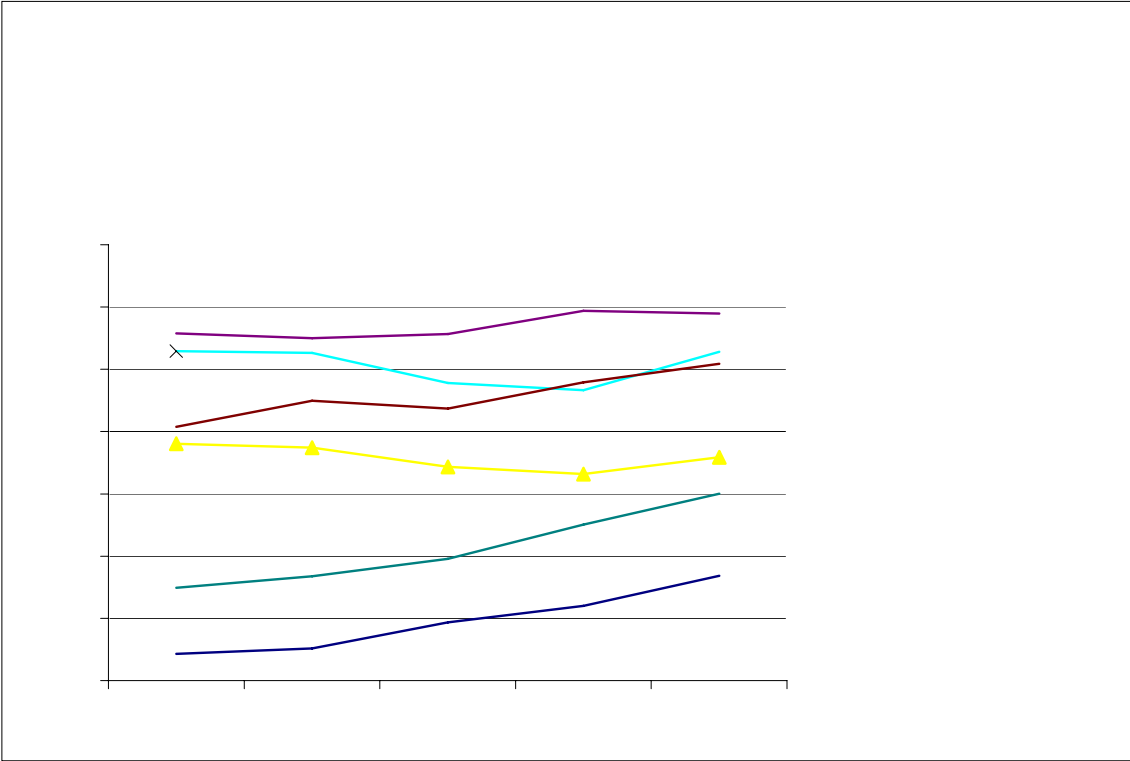


Figure 2.5
Average Amount of Unmet Financial Need by Income Level at
the UM-Columbia, FY00 vs. FY04

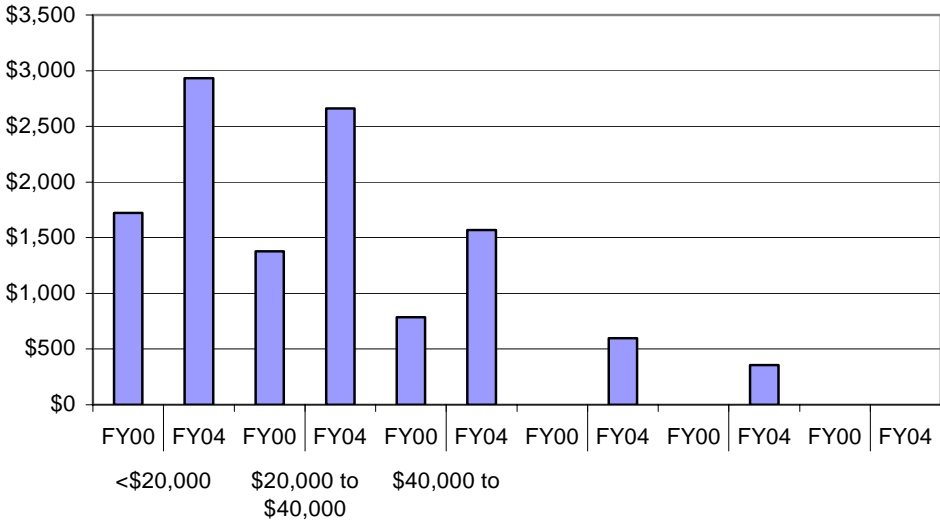
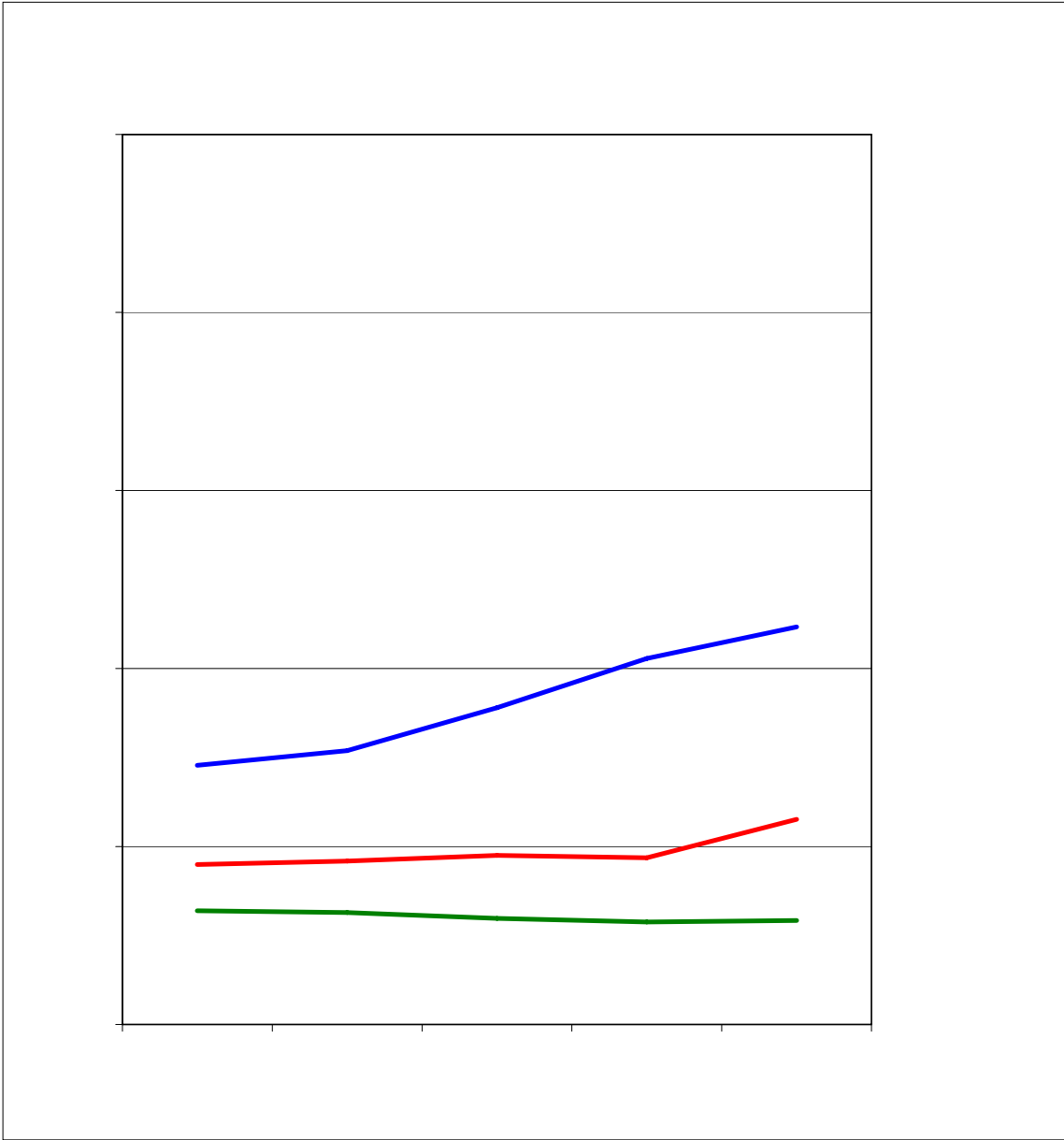


Table 2.3

	FY00	FY01	FY02	FY03	FY04	FY00	FY01	FY02	FY03	FY04	# Change FY00-FY04	% Change FY00-FY04
Total Enrolled for 9 months (N)	761	748	686	663	717						-44	-6%
Cost of Attendance	\$12,272	\$12,608	\$13,099	\$14,074	\$15,527						\$3,255	27%
Less Expected Family Contribution*	<u>992</u>	<u>959</u>	<u>1,046</u>	<u>1,120</u>	<u>919</u>	8%	8%	8%	8%	6%	-73	-7%
Financial Need	11,280	11,649	12,053	12,954	14,608	92%	92%	92%	92%	94%	3,328	30%
Less Grant Aid	5,344	5,682	6,060	6,246	6,428	44%	45%	46%	44%	41%	1,084	20%
Unmet Need	\$5,936	\$5,967	\$5,993	\$6,708	\$8,180	48%	47%	46%	48%	53%	2,244	38%
% Grant Aid that Met Financial Need	47%	49%	50%	48%	45%							
Non-Grant Sources to Meet Remaining Unmet Financial Need												
College Work Study	\$144	\$173	\$190	\$252	\$284	1%	1%	1%	2%	2%	140	97%
Need-based Loans	3,246	2,964	2,878	3,090	3,715	26%	24%	22%	22%	24%	469	14%
Alternative Loans	824	738	681	1,024	1,249	7%	6%	5%	7%	8%	425	52%
Remaining Unmet Need	\$1,722	\$2,092	\$2,244	\$2,342	\$2,932	14%	17%	17%	17%	19%	1,210	70%
*Amount Borrowed to meet EFC	\$303	\$313	\$300	\$308	\$370	2%	2%	2%	2%	2%	67	22%
	FY00	FY01	FY02	FY03	FY04	FY00	FY01	FY02	FY03	FY04	# Change FY00-FY04	% Change FY00-FY04
Total Enrolled for 9 months (N)	1,058	1,052	956	933	1,056						-2	0%
Cost of Attendance	\$12,155	\$12,541	\$13,088	\$14,129	\$15,527						\$3,372	28%
Less Expected Family Contribution*	<u>2,529</u>	<u>2,626</u>	<u>2,775</u>	<u>2,538</u>	<u>2,775</u>	21%	21%	21%	18%	18%	246	10%
Financial Need	9,626	9,915	10,313	11,591	12,752	79%	79%	79%	82%	82%	3,126	32%

Table 2.3 (Continued)

	FY00	FY01	FY02	FY03	FY04	FY00	FY01	FY02	FY03	FY04	# Change FY00-FY04	% Change FY00-FY04
Total Enrolled for 9 months (N)	815	899	874	958	1,018						203	25%
Cost of Attendance	\$12,216	\$12,609	\$13,151	\$14,179	\$15,600						\$3,384	28%
Less Expected Family Contribution*	<u>7,955</u>	<u>8,019</u>	<u>8,435</u>	<u>8,537</u>	<u>9,140</u>	65%	64%	64%	60%	59%	1,185	15%
Financial Need	4,261	4,590	4,716	5,642	6,460	35%	36%	36%	40%	41%	2,199	52%
Less Grant Aid	2,402	2,896	3,031	3,196	3,016	20%	23%	23%	23%	19%	614	26%
Unmet Need	\$1,859	\$1,694	\$1,685	\$2,446	\$3,444	15%	13%	13%	17%	22%	1,585	85%
% Grant Aid that Met Financial Need	56%	63%	64%	57%	49%							
Non-Grant Sources to Meet Remaining Unmet Financial Need												
College Work Study	\$109	\$124	\$131	\$171	\$231	1%	1%	1%	1%	1%	122	112%
Need-based Loans	1,772	1,579	1,590	1,892	2,415	15%	13%	12%	13%	15%	643	36%
Alternative Loans	117	88	93	255	200	1%	1%	1%	2%	1%	83	71%
Remaining Unmet Need	-\$139	-\$97	-\$129	\$128	\$598	-1%	-1%	-1%	1%	4%	737	-530%
*Amount Borrowed to meet EFC	\$2,967	\$3,115	\$3,246	\$3,396	\$3,629	24%	25%	25%	24%	23%	662	22%
	FY00	FY01	FY02	FY03	FY04	FY00	FY01	FY02	FY03	FY04	# Change FY00-FY04	% Change FY00-FY04
Total Enrolled for 9 months (N)	298	335	391	501	601						303	102%
Cost of Attendance	\$12,295	\$12,631	\$13,201	\$14,265	\$15,674						\$3,379	27%
Less Expected Family Contribution*	<u>8,576</u>	<u>9,186</u>	<u>9,361</u>	<u>9,922</u>	<u>10,305</u>	70%	73%	71%	70%	66%	1,729	20%
Financial Need	3,719	3,445	3,840	4,343	5,369	30%	27%	29%	30%	34%	1,650	44%
Less Grant Aid	1,955	2,453	2,553	2,544	2,612	16%	19%	19%	18%	17%	657	34%
Unmet Need	\$1,764	\$992	\$1,287	\$1,799	\$2,757	14%	8%	10%	13%	18%	993	56%
% Grant Aid that Met Financial Need	53%	71%	66%	59%	51%							
Non-Grant Sources to Meet Remaining Unmet Financial Need												
College Work Study	\$60	\$84	\$94	\$95	\$123	0%	1%	1%	1%	1%	63	105%
Need-based Loans	1,768	1,316	1,504	1,748	2,101	14%	10%	11%	12%	13%	333	19%
#												

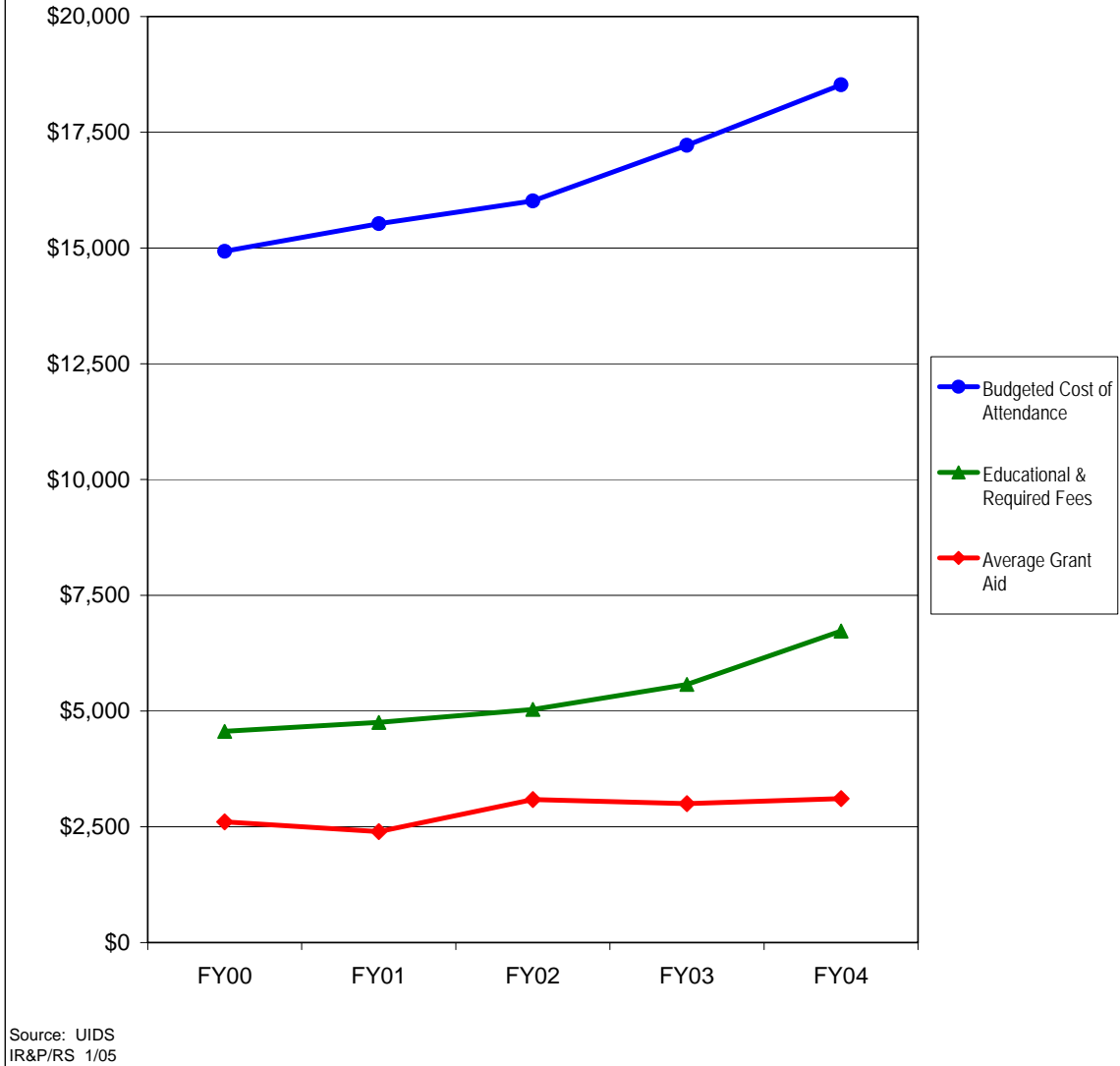


	FY00	FY01	FY02	FY03	FY04	5-yr # Change	5-yr % Change
Completed FAFSA, did not have a need	290	242	273	273	294	4	1.4%
Grant aid, no FAFSA	<u>349</u>	<u>387</u>	<u>323</u>	<u>303</u>	<u>290</u>	<u>-59</u>	-16.9%
Aid recipients with no need	639	629	596	576	584	-55	-8.6%
Aid recipients with need*	1,456	1,538	1,780	2,056	2,234	778	53.4%
Full pay / No aid	899	918	950	937	1,152	253	28.1%
Total of all full-time, Degree-Seeking MO UC	<u>2,994</u>	<u>3,085</u>	<u>3,326</u>	<u>3,569</u>	<u>3,970</u>	<u>976</u>	<u>32.6%</u>

* All aid recipients with need completed a FAFSA and were not expected to pay the entire cost of attendance.

Note: Undergraduate Pharmacy and Medical students have been removed from this analysis.

Figure 3.2
Educational and Required Fees vs. 9-Month Cost of Attendance and Grant Aid
for Full-time Undergraduate Missouri Residents at the University of Missouri-
Kansas City, FY00 - FY04



	FY00	FY01	FY02	FY03	FY04	5-yr # Change	5-yr % Change
Budgeted Cost of Attendanc	\$14,929	\$15,527	\$16,018	\$17,219	\$18,525	\$3,596	24.1%
Educational & Required Fee	\$4,562	\$4,753	\$5,036	\$5,573	\$6,726	\$2,164	47.4%
Average Grant Aid	\$2,606	\$2,396	\$3,086	\$3,002	\$3,108	\$502	19.3%

Note: Undergraduate Pharmacy and Medical students have been removed from this analysis.

Table 3.1**Average Institutional Grant Aid Distributed to Resident, Full-time, Degree-Seeking Undergraduates by Financial Need at the University of Missouri-Kansas City, FY00 - FY04**

	FY00		FY01		FY02		FY03		FY04	
	N	Mean	N	Mean	N	Mean	N	Mean	N	Mean
With Need	1,456	\$662	1,538	\$742	1,780	\$741	2,056	\$818	2,234	\$907
Without Need	581	1,507	629	1,546	596	1,537	576	1,561	584	1,692

Source: UIDS
IR&P/LCB 3/05

Table 3.2**Total Grant Aid as % of Educational and Required Fees by Income Level at the University of Missouri-Kansas City, FY00 & FY04**

Income Level	FY00		FY04	
	Grant Aid	% Educational & Required Fees	Grant Aid	% Educational & Required Fees
<\$20,000	\$3,649	80%	\$4,856	72%
\$20,000 to \$40,00	\$2,852	63%	\$4,357	65%
\$40,000 to \$60,000	\$2,494	55%	\$3,365	50%
\$60,000 to \$80,000	\$1,809	40%	\$2,675	40%
\$80,000 to \$100,000	\$1,699	37%	\$1,957	29%
>\$100,000	\$2,584	57%	\$2,033	30%

Source: UIDS
IR&P/LCB 3/05

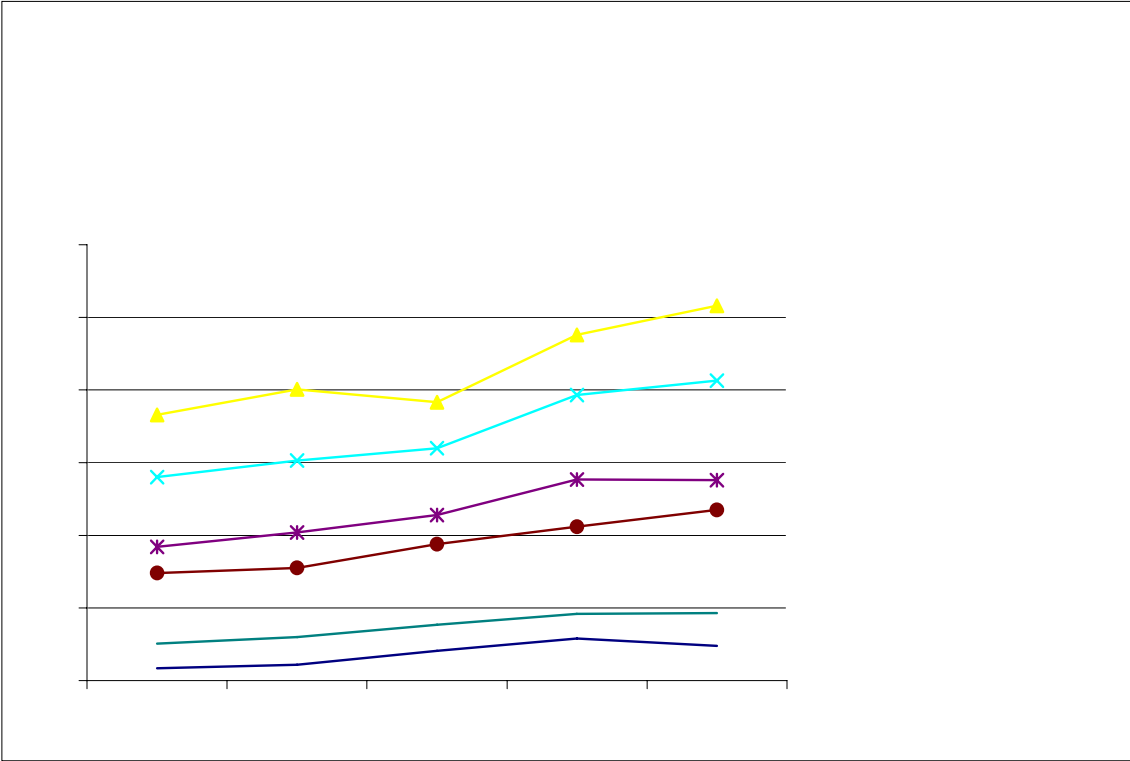


Figure 3.5
Average Amount of Unmet Financial Need by Income Level at
the UM-Kansas City, FY00 vs. FY04

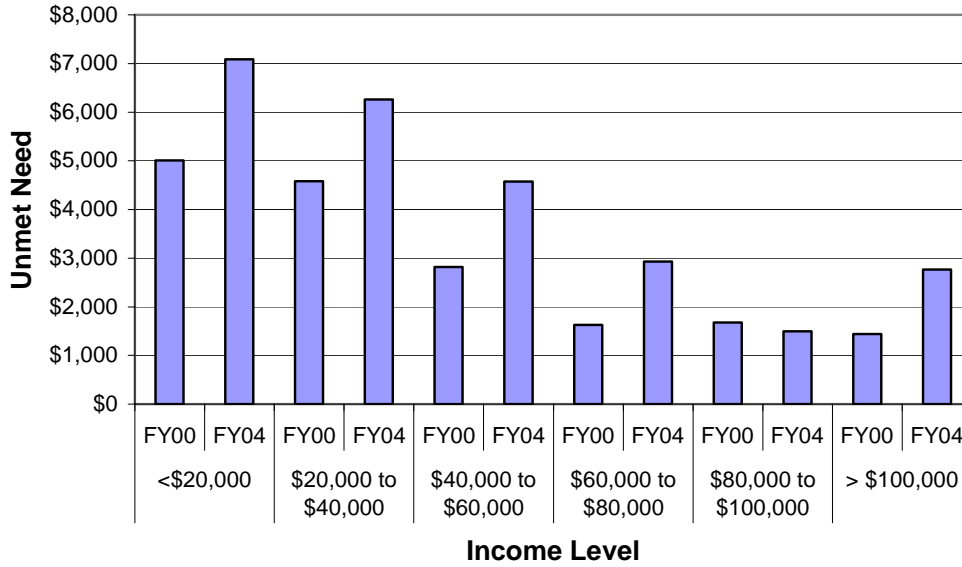


Table 3.3

	FY00	FY01	FY02	FY03	FY04	FY00	FY01	FY02	FY03	FY04	# Change FY00-FY04	% Change FY00-FY04
Total Enrolled for 9 months (N)	366	401	383	476	516						150	41%
Cost of Attendance	\$15,733	\$16,175	\$16,707	\$17,817	\$19,156						\$3,423	22%
Less Expected Family Contribution*	<u>1,316</u>	<u>1,092</u>	<u>892</u>	<u>1,111</u>	<u>989</u>	8%	7%	5%	6%	5%	-327	-25%
Financial Need	14,417	15,083	15,815	16,706	18,167	92%	93%	95%	94%	95%	3,750	26%
Less Grant Aid	3,649	4,135	5,162	4,895	4,856	23%	26%	31%	27%	25%	1,207	33%
Unmet Need	\$10,768	\$10,948	\$10,653	\$11,811	\$13,311	68%	68%	64%	66%	69%	2,543	24%
% Grant Aid that Met Financial Need	25%	27%	33%	29%	27%							
Non-Grant Sources to Meet Remaining Unmet Financial Need												
College Work Study	\$130	\$167	\$243	\$196	\$230	1%	1%	1%	1%	1%	100	77%
Need-based Loans	3,963	3,857	3,466	3,684	3,958	25%	24%	21%	21%	21%	-5	0%
Alternative Loans	1,665	1,681	1,553	1,768	2,039	11%	10%	9%	10%	11%	374	22%
Remaining Unmet Need	\$5,010	\$5,243	\$5,391	\$6,163	\$7,084	32%	32%	32%	35%	37%	2,074	41%
*Amount Borrowed to meet EFC	\$755	\$632	\$544	\$731	\$698	5%	4%	3%	4%	4%	-57	-8%
	FY00	FY01	FY02	FY03	FY04	FY00	FY01	FY02	FY03	FY04	# Change FY00-FY04	% Change FY00-FY04
Total Enrolled for 9 months (N)	280	303	320	393	413						133	48%
Cost of Attendance	\$15,107	\$15,480	\$15,939	\$17,439	\$18,549						\$3,442	23%
Less Expected Family Contribution*	<u>3,603</u>	<u>3,459</u>	<u>3,261</u>	<u>3,876</u>	<u>3,551</u>	24%	22%	20%	22%	19%	-52	-1%
Financial Need	11,504	12,021	12,678	13,563	14,998	76%	78%	80%	78%	81%	3,494	30%
Less Grant Aid	2,852	3,133	4,218	3,743	4,357	19%	20%	26%	21%	23%	1,505	53%
Unmet Need	\$8,652	\$8,888	\$8,460	\$9,820	\$10,641	57%	57%	53%	56%	57%	1,989	23%
% Grant Aid that Met Financial Need	25%	26%	33%	28%	29%							
Non-Grant Sources to Meet Remaining Unmet Financial Need												
College Work Study	\$154	\$281	\$293	\$315	\$198	1%	2%	2%	2%	1%	44	29%
Need-based Loans	3,370	3,322	3,149	3,444	3,530	22%	21%	20%	20%	19%	160	5%
Alternative Loans	546	484	374	598	655	4%	3%	2%	3%	4%	109	20%
Remaining Unmet Need	\$4,582	\$4,801	\$4,644	\$5,463	\$6,258	30%	31%	29%	31%	34%	1,676	37%
*Amount Borrowed to meet EFC	\$1,254	\$966	\$1,030	\$1,392	\$1,350	8%	6%	6%	8%	7%	96	8%
	FY00	FY01	FY02	FY03	FY04	FY00	FY01	FY02	FY03	FY04	# Change FY00-FY04	% Change FY00-FY04
Total Enrolled for 9 months (N)	184	204	228	277	276						92	50%
Cost of Attendance	\$14,324	\$15,355	\$15,847	\$16,989	\$18,055						\$3,731	26%
Less Expected Family Contribution*	<u>5,616</u>	<u>5,608</u>	<u>5,995</u>	<u>6,068</u>	<u>6,225</u>	39%	37%	38%	36%	34%	609	11%
Financial Need	8,708	9,747	9,852	10,921	11,830	61%	63%	62%	64%	66%	3,122	36%

Table 3.3 (Continued)

	FY00	FY01	FY02	FY03	FY04	FY00	FY01	FY02	FY03	FY04	# Change FY00-FY04	% Change FY00-FY04
Total Enrolled for 9 months (N)												

Table 4.1**Average Institutional Grant Aid Distributed to Resident, Full-time, Degree-Seeking Undergraduates by Financial Need at the University of Missouri-Rolla, FY00 - FY04**

	FY00		FY01		FY02		FY03		FY04	
	N	Mean	N	Mean	N	Mean	N	Mean	N	Mean
With Need	1,377	\$1,408	1,304	\$1,418	1,385	\$1,421	1,501	\$1,531	1,735	\$1,583
Without Need	837	2,379	927	2,545	943	2,427	933	2,522	916	2,662

Source: UIDS
IR&P/LCB 3/05

Table 4.2**Total Grant Aid as % of Educational and Required Fees by Income Level at the University of Missouri-Rolla, FY00 & FY04**

Income Level	FY00		FY04	
	Grant Aid	% Educational & Required Fees	Grant Aid	% Educational & Required Fees
<\$20,000	\$4,234	91%	\$6,048	91%
\$20,000 to \$40,00	\$4,553	98%	\$5,889	89%
\$40,000 to \$60,000	\$3,672	79%	\$4,540	68%
\$60,000 to \$80,000	\$3,099	66%	\$3,561	54%
\$80,000 to \$100,000	\$3,292	71%	\$3,162	48%
>\$100,000	\$3,526	76%	\$3,557	54%

Source: UIDS
IR&P/LCB 3/05

Figure 4.3
Number of Full-time, Degree-Seeking 9-Month Undergraduate
Missouri Residents with Financial Need by Income Level at the
University of Missouri-Rolla, FY00 - FY04

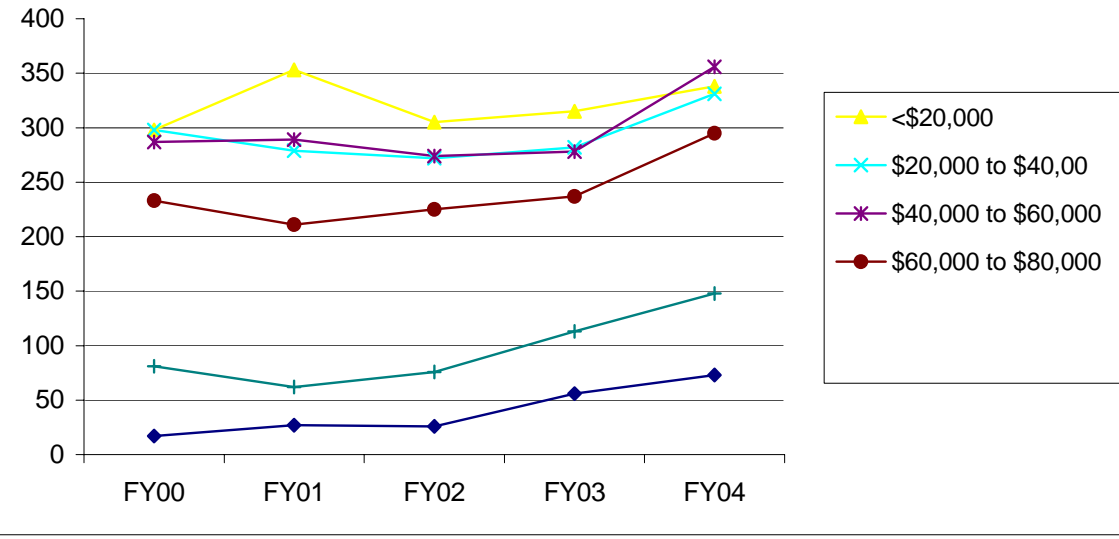
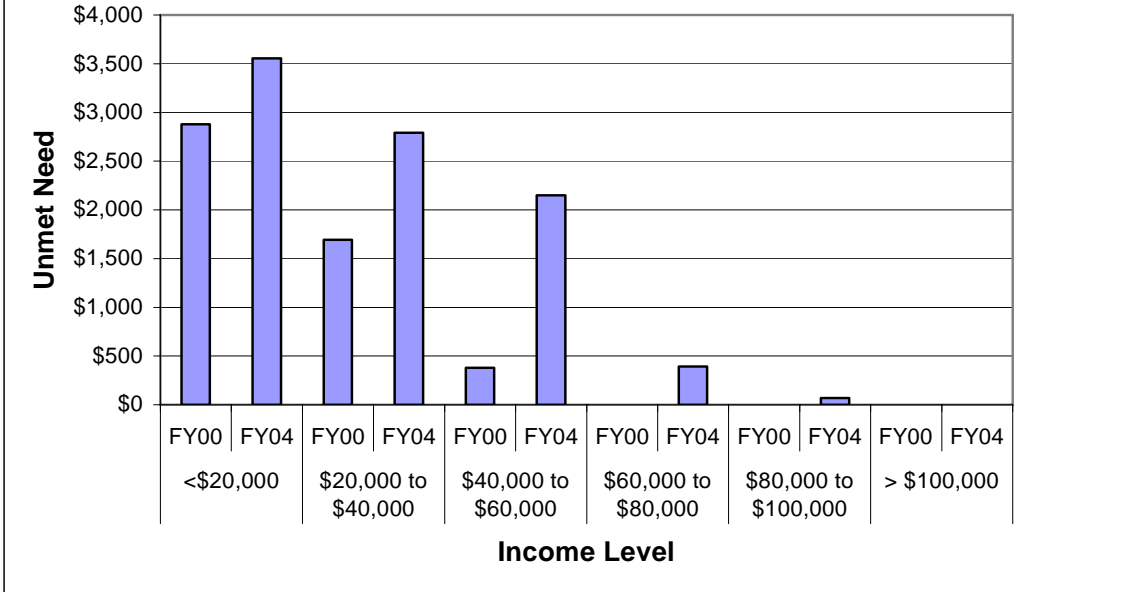


Figure 4.5
Average Amount of Unmet Financial Need by Income Level at
the UM-Rolla, FY00 vs. FY04

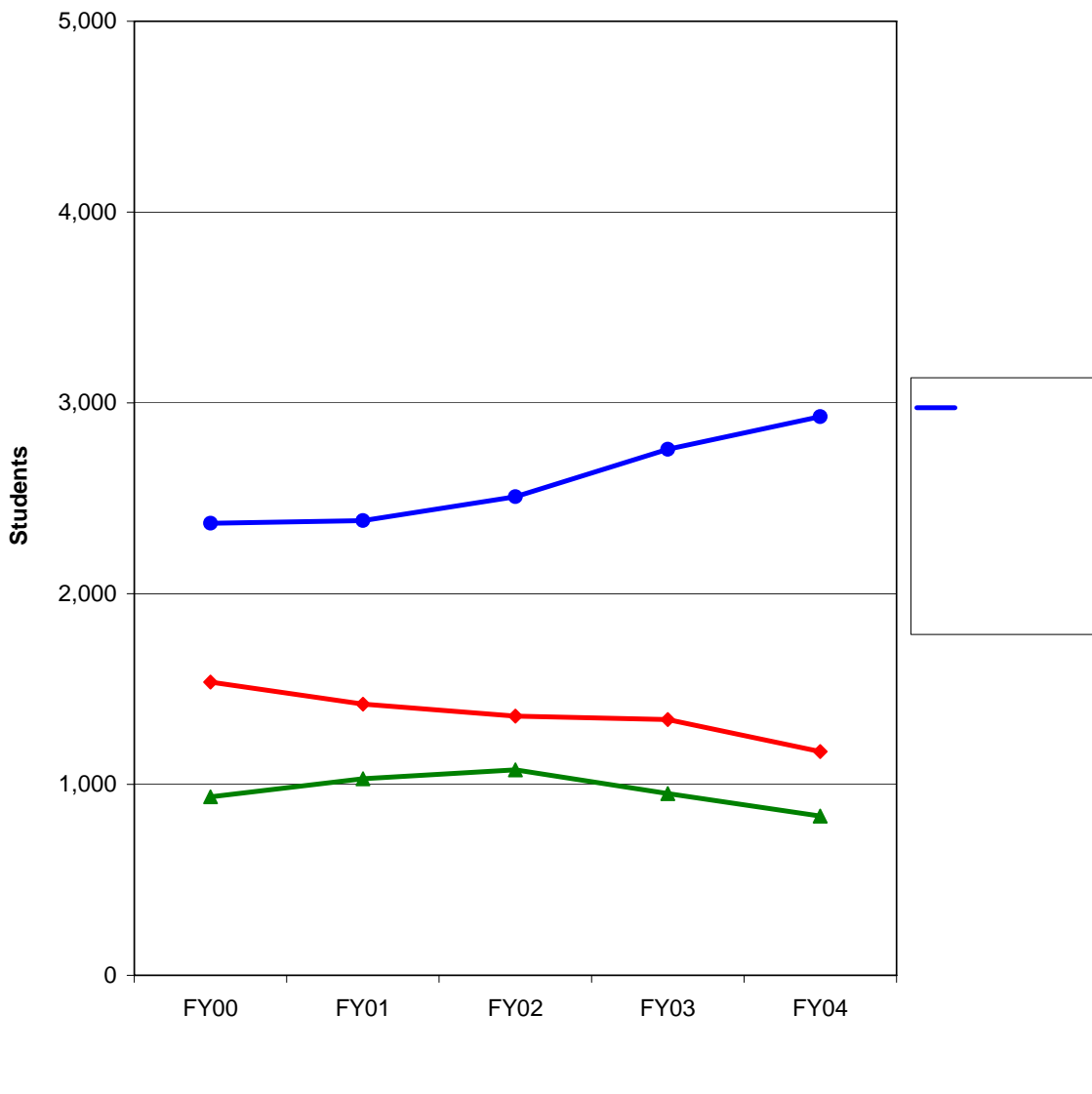


Source: UIDS
 IR&P/LCB 3/05

Table 4.3 (Continued)

FY00	FY01	FY02	FY03	FY04	FY00	FY01	FY02	FY03	FY04	# Change FY00-FY04	%
------	------	------	------	------	------	------	------	------	------	-----------------------	---

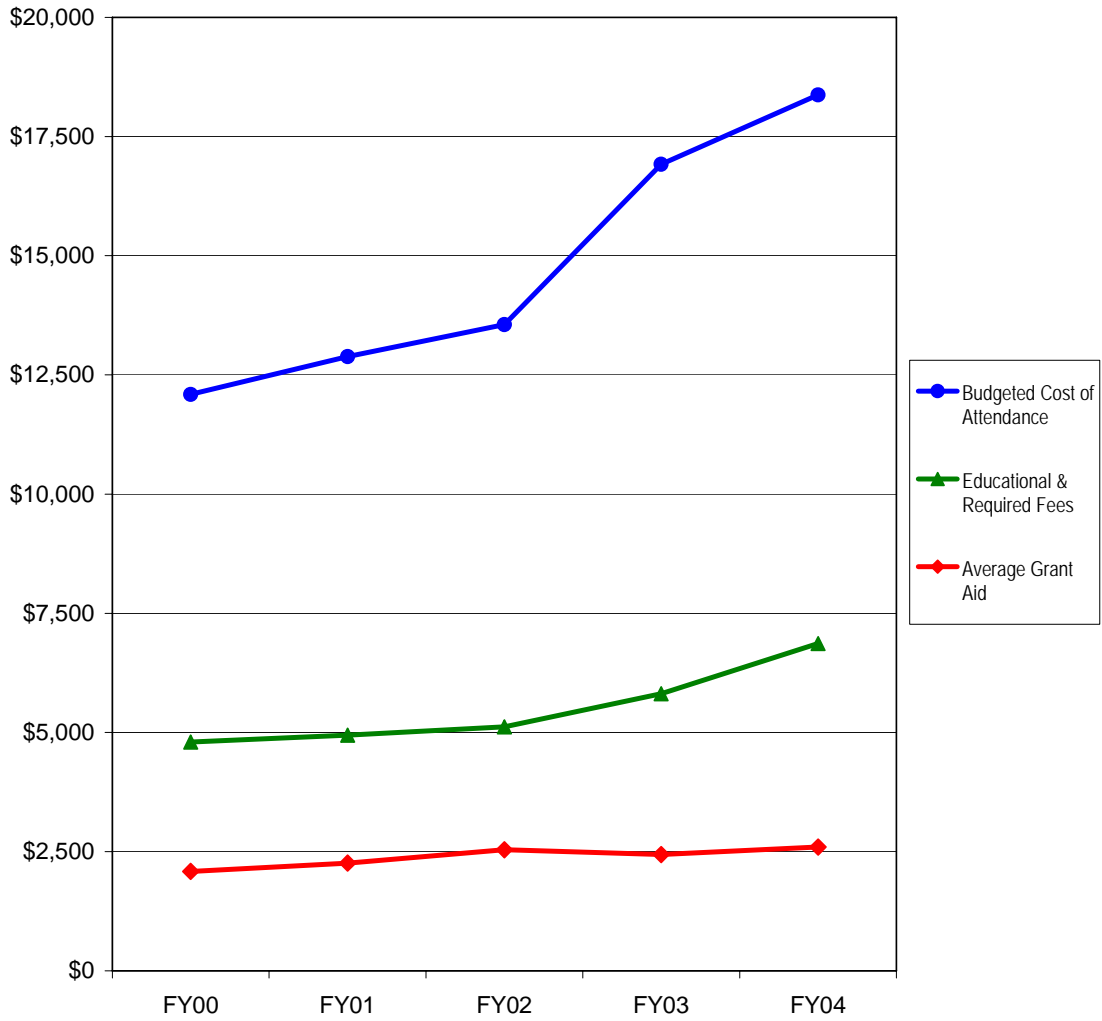
Figure 5.1
Distribution of Financial Aid for Full-time, Degree-Seeking Undergraduate Missouri Residents at the University of Missouri-St. Louis, FY00 - FY04



	FY00	FY01	FY02	FY03	FY04	5-yr # Change	5-yr % Change
Completed FAFSA, did not have a need	570	582	622	530	470	-100	-17.5%
Grant aid, no FAFSA	<u>366</u>	<u>448</u>	<u>455</u>	<u>423</u>	<u>365</u>	<u>-1</u>	-0.3%
Aid recipients with no need	936	1,030	1,077	953	835	-101	-10.8%
Aid recipients with need*	2,369	2,383	2,508	2,757	2,928	559	23.6%
Full pay / No aid	1,537	1,421	1,358	1,340	1,173	-364	-23.7%
Total of all full-time, Degree-Seeking MO UC	4,842	4,834	4,943	5,050	4,936	94	1.9%

* All aid recipients with need completed a FAFSA and were not expected to pay the entire cost of attendance.

Figure 5.2
Educational and Required Fees vs. 9-Month Cost of Attendance and Grant Aid
for Full-time Undergraduate Missouri Residents at the University of Missouri-
St. Louis, FY00 - FY04



	FY00	FY01	FY02	FY03	FY04	5-yr # Change	5-yr % Change
Budgeted Cost of Attendanc	\$12,090	\$12,887	\$13,556	\$16,918	\$18,375	\$6,285	52.0%
Educational & Required Fee	\$4,796	\$4,940	\$5,116	\$5,813	\$6,866	\$2,070	43.2%
Average Grant Aid	\$2,083	\$2,260	\$2,538	\$2,437	\$2,595	\$512	24.6%

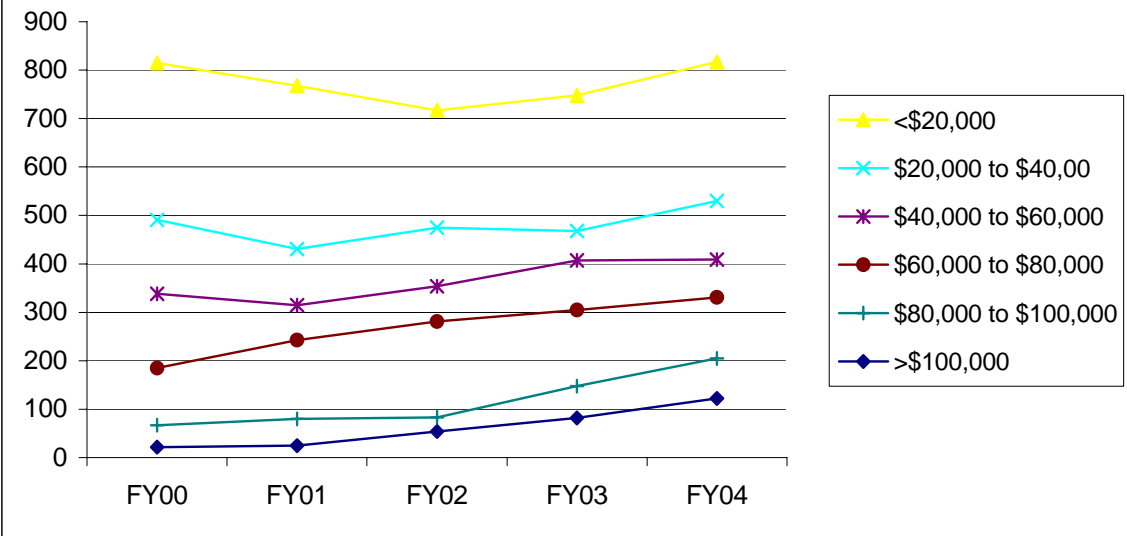
Table 5.1

Average Institutional Grant Aid Distributed to Resident, Full-time, Degree-Seeking

	N	FY00 Mean	N	FY01 Mean	N	FY02 Mean	N	FY03 Mean	N	FY04 Mean
With Need	2,369	\$478	2,383	\$524	2,508	\$516	2,757	\$437	2,928	\$504
Without Need	936	1,161	1,030	1,190	1,077	1,105	953	1,022	835	993

Source: UIDS
IR&P/LCB 3/05

Figure 5.3
Number of Full-time, Degree-Seeking 9-Month Undergraduate
Missouri Residents with Financial Need by Income Level at the
University of Missouri-St. Louis, FY00 - FY04



Source: UIDS
 IR&P/LCB 3/05
 Fd/Cs561s 2q\$20,00

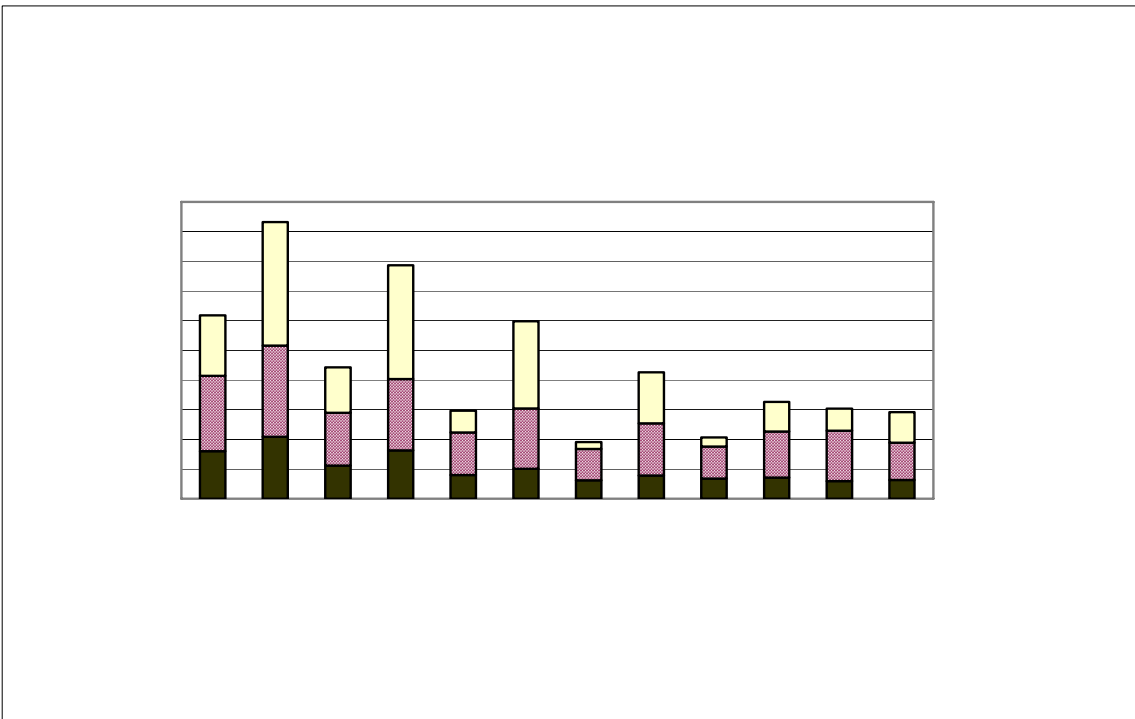
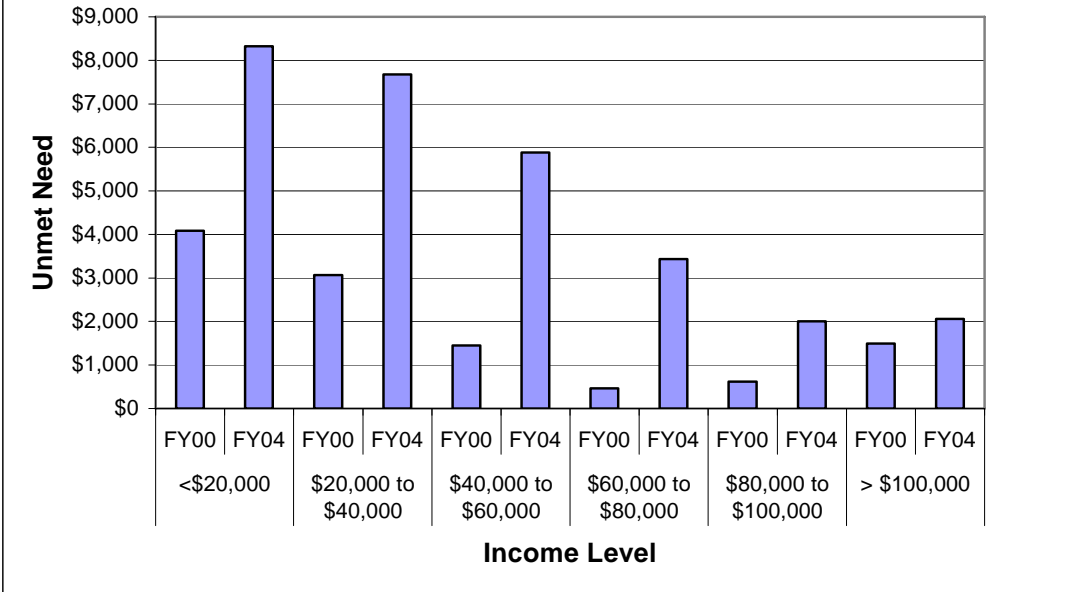


Figure 5.5
Average Amount of Unmet Financial Need by Income Level at
the UM-St. Louis, FY00 vs. FY04



Source: UIDS
 IR&P/LCB 3/05

Table 5.3

	FY00	FY01	FY02	FY03	FY04	FY00	FY01	FY02	FY03	FY04	# Change FY00-FY04	% Change FY00-FY04
Total Enrolled for 9 months (N)	815	768	717	748	817						2	0%
Cost of Attendance	\$13,606	\$14,088	\$14,666	\$18,489	\$19,774						\$6,168	45%
Less Expected Family Contribution*	<u>1,245</u>	<u>1,125</u>	<u>1,088</u>	<u>1,075</u>	<u>1,140</u>	9%	8%	7%	6%	6%	-105	-8%
Financial Need	12,361	12,963	13,578	17,414	18,634	91%	92%	93%	94%	94%	6,273	51%
Less Grant Aid	3,198	3,481	4,130	4,094	4,162	24%	25%	28%	22%	21%	964	30%
Unmet Need	\$9,163	\$9,482	\$9,448	\$13,320	\$14,472	67%	67%	64%	72%	73%	5,309	58%
% Grant Aid that Met Financial Need	26%	27%	30%	24%	22%							
Non-Grant Sources to Meet Remaining Unmet Financial Need												
College Work Study	\$98	\$62	\$104	\$126	\$106	1%	0%	1%	1%	1%	8	8%
Need-based Loans	3,649	3,601	3,639	3,736	3,847	27%	26%	25%	20%	19%	198	5%
Alternative Loans	1,332	1,568	1,410	1,851	2,197	10%	11%	10%	10%	11%	865	65%
Remaining Unmet Need	\$4,084	\$4,251	\$4,295	\$7,607	\$8,322	30%	30%	29%	41%	42%	4,238	104%
*Amount Borrowed to meet EFC	\$657	\$671	\$628	\$671	\$738	5%	5%	4%	4%	4%	81	12%

	FY00	FY01	FY02	FY03	FY04	FY00	FY01	FY02	FY03	FY04	# Change FY00-FY04	% Change FY00-FY04
Total Enrolled for 9 months (N)	491	431	475	468	530						39	8%
Cost of Attendance	\$12,078	\$12,883	\$13,838	\$17,403	\$18,924						\$6,846	57%
Less Expected Family Contribution*	<u>3,221</u>	<u>3,170</u>	<u>3,336</u>	<u>3,461</u>	<u>3,191</u>	27%	25%	24%	20%	17%	-30	-1%
Financial Need	8,857	9,713	10,502	13,942	15,733	73%	75%	76%	80%	83%	6,876	78%
Less Grant Aid	2,242	2,539	3,144	3,053	3,254	19%	20%	23%	18%	17%	1,012	45%
Unmet Need	\$6,615	\$7,174	\$7,358	\$10,889	\$12,479	55%	56%	53%	63%	66%	5,864	89%
% Grant Aid that Met Financial Need	25%	26%	30%	22%	21%							
Non-Grant Sources to Meet Remaining Unmet Financial Need												
College Work Study	\$60	\$30	\$76	\$182	\$99	0%	0%	1%	1%	1%	39	65%
Need-based Loans	3,174	3,376	3,169	3,563	3,659	26%	26%	23%	20%	19%	485	15%
Alternative Loans	310	414	501	499	1,046	3%	3%	4%	3%	6%	736	237%
Remaining Unmet Need	\$3,071	\$3,354	\$3,612	\$6,645	\$7,675	25%	26%	26%	38%	41%	4,604	150%

*Amount Borrowed to mee-23458y061(\$37(F(c)01(3(o666-79(%)-22904(\$)-959(18)-9986)02(0)1(\$)-99(18066(01)-10(0)9)-1734571(\$7,9(18)-99(01)-10(4)-23411(\$7,9(9(01)-10(2)-2345734589(3%))

o

Table 5.3 (Continued)

	FY00	FY01	FY02	FY03	FY04	FY00	FY01	FY02	FY03	FY04	# Change FY00-FY04	% Change FY00-FY04
Total Enrolled for 9 months (N)	185	243	281	305	331						146	79%
Cost of Attendance	\$11,123	\$12,512	\$13,540	\$16,213	\$17,438						\$6,315	57%